

BAS Antarctic Peninsula Automatic Weather Station Update

Steve Colwell

Overview

- Servicing of BAS stations
- Non BAS stations
- OFCAP



Fossil Bluff

- First visited 11th November and wind sensor was replaced as it was missing and only the cable remained.
- Visited again on the 23rd February and a 9602 SBD modem was installed and batteries were replaced.
- SBD modem is now transmitting data every 3 hours.

9602 SBD modem



- Lower power consumption than the 9601.
- Operates down to -40.
- Smaller footprint than the 9601.



Sky Blu



- Visited 4th January
- Added a new mast section and relocated equipment higher up the mast.
- Replaced batteries.

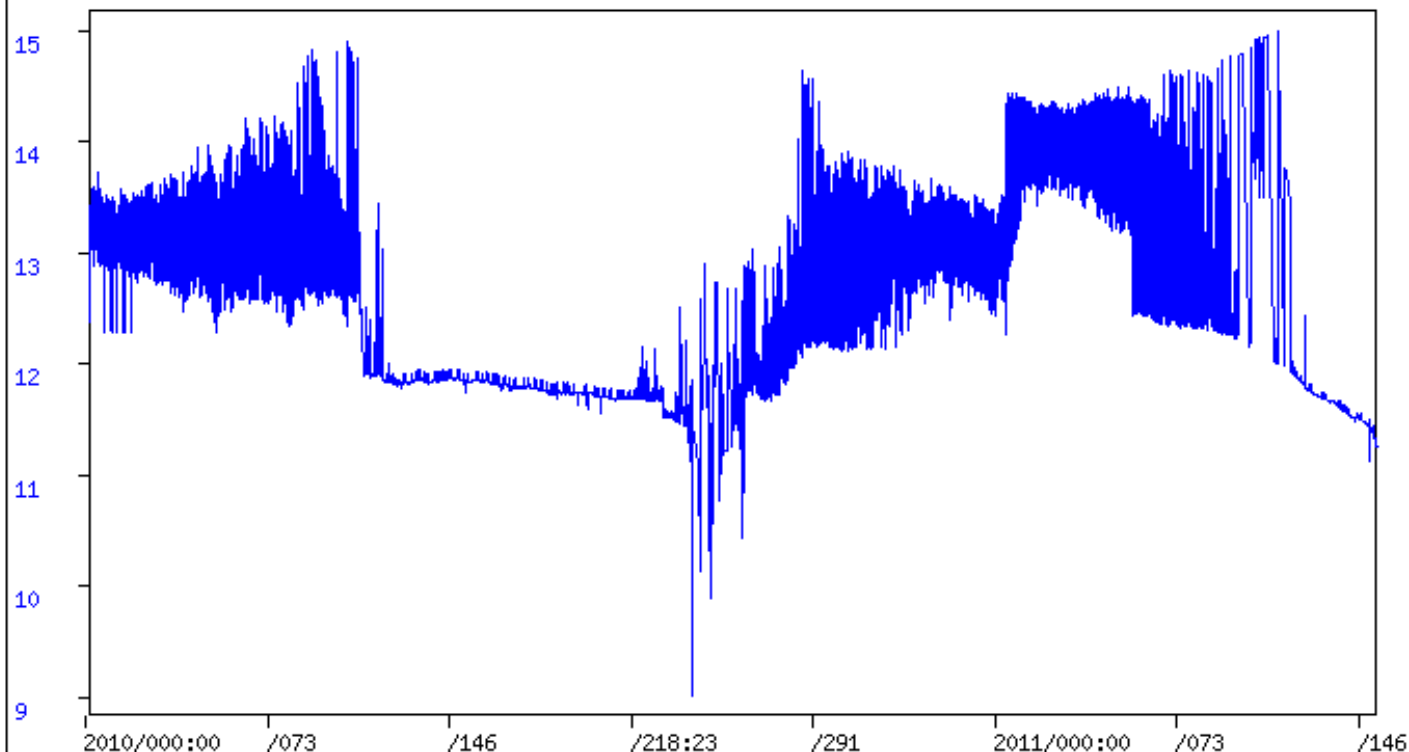
Sky Blu plans for next season



- Install SBD modem to send real time data every 3 hours.
- Sort out battery charging problem.
- Replace solar panel.

Obtime | VOLTAGE | Graph

0



Larsen AWS



- Visited on the 28th January
- Added a new mast section and relocated equipment higher up the mast.
- Replaced batteries.
- Replaced ARGOS antenna cable.

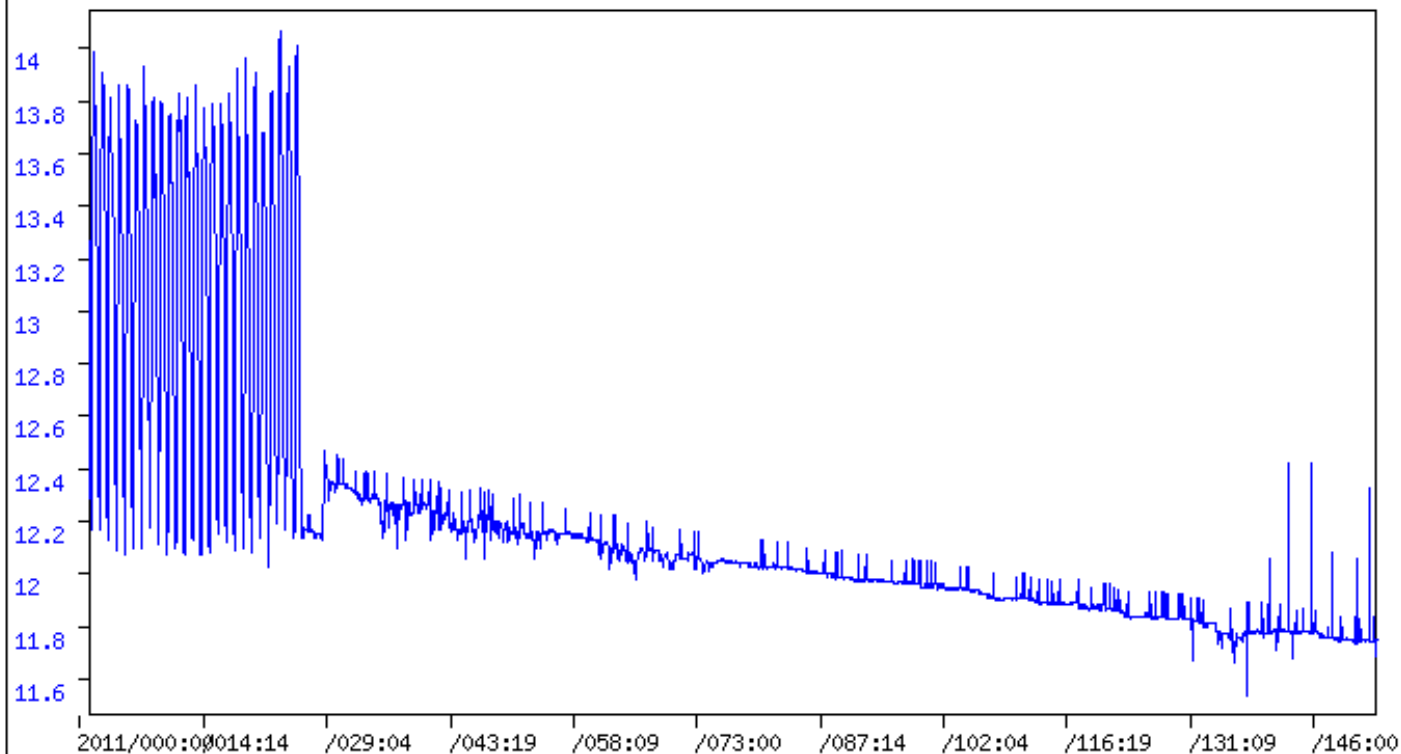
Larsen AWS plans for next season



- Install SBD modem to send real time data every 3 hours.
- Sort out battery charging problem

Obtime | VOLTAGE | Graph

0



Butler and Limbert AWS

- Not visited this season.
- Plan to replace batteries and install SBD modems next season.
- Butler will need its external memory module replacing as it is currently showing a write error and data is being stored on the loggers internal memory.

Baldrick

- Visited on the 15th December.
- Wind sensor and temperature probe replaced.
- No plans to install SBD modem as the site its too cold.

Thomas AWS

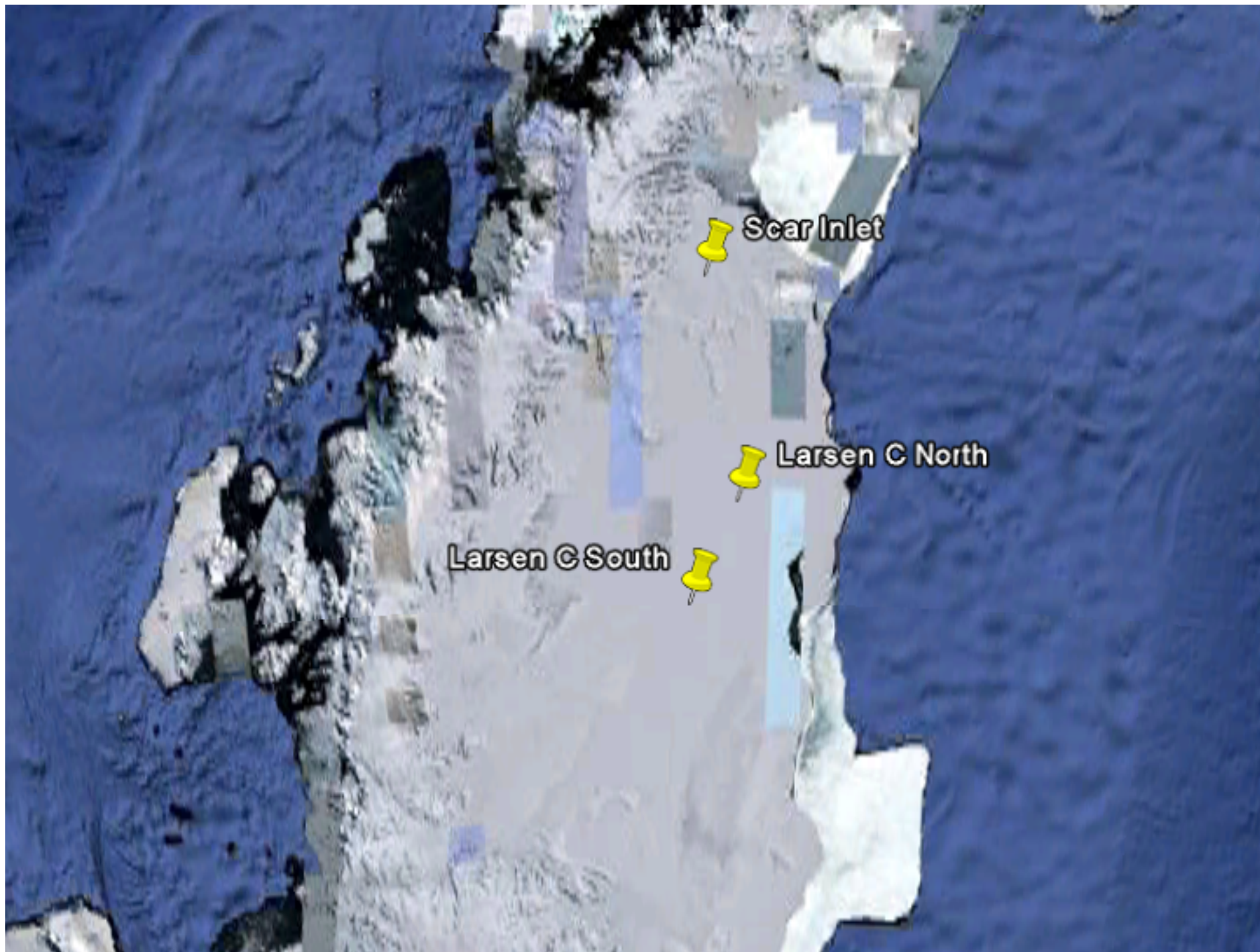
- The AWS that was at the Thomas site was removed on the 20th December.
- Re-installed on the Fletcher Promontory on the 18th February 2011.
- Currently the sonic snow depth sensor is not working.
- This AWS will be removed next season.



Dutch AWS



- The 2 Dutch AWS on the Larsen at Larsen North and Larsen South were serviced.
- A third AWS was installed at Scar Inlet and this has temperature sensors down into the snow.
- It also measures incoming and outgoing long and shortwave radiation

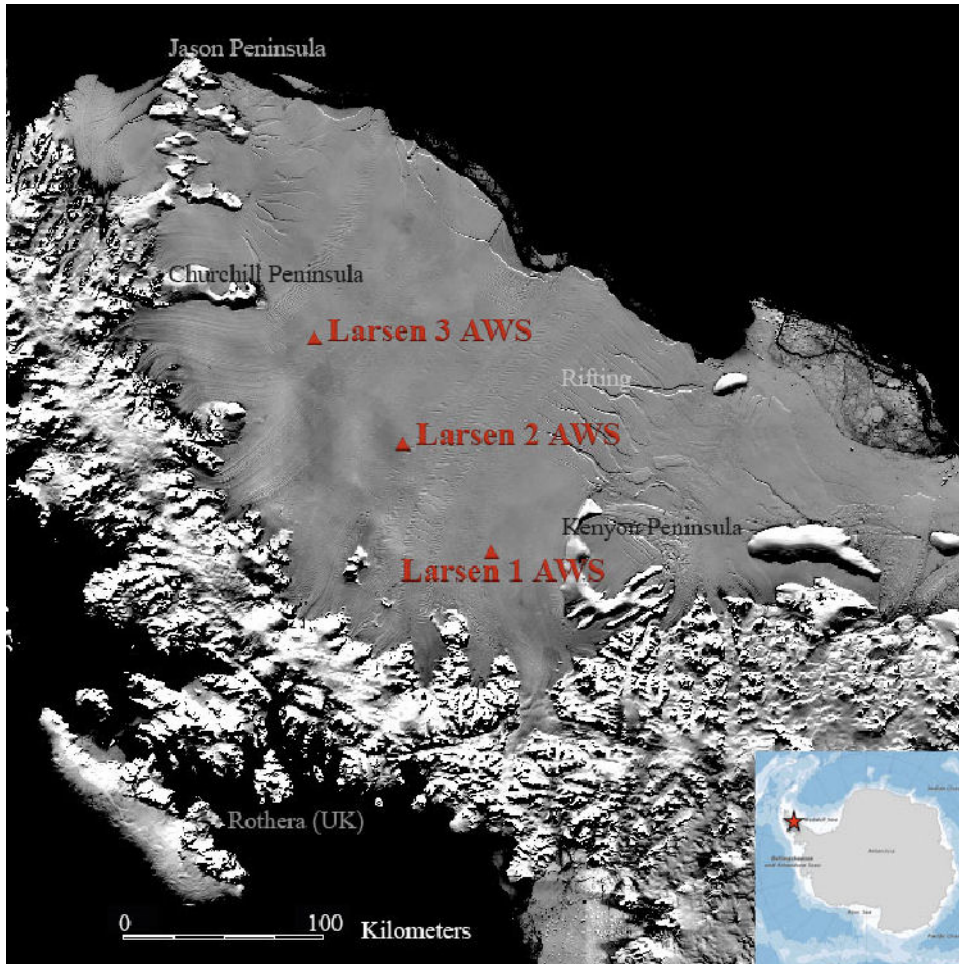


Scar Inlet

Larsen C North

Larsen C South

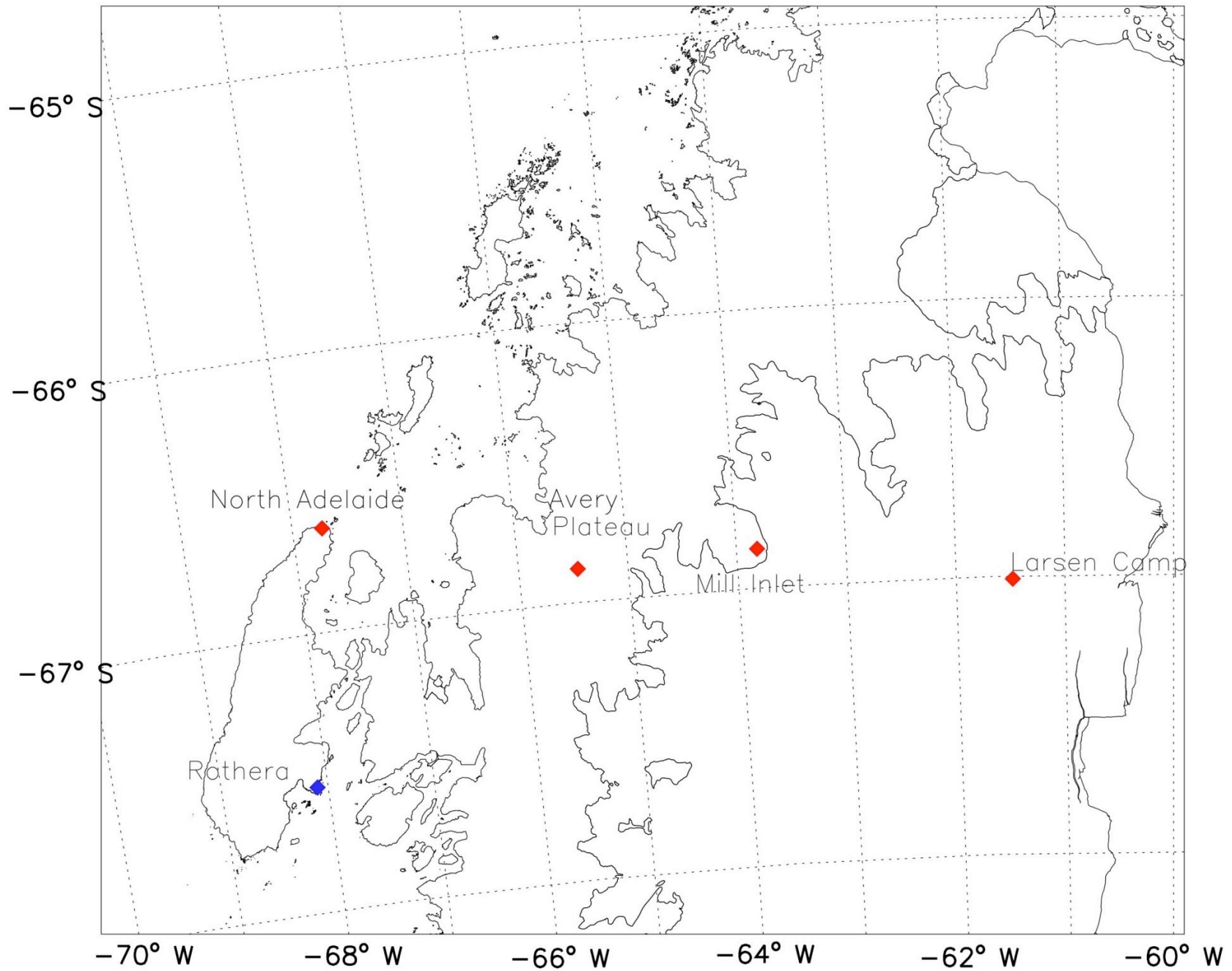
Konrad Steffen's AWS

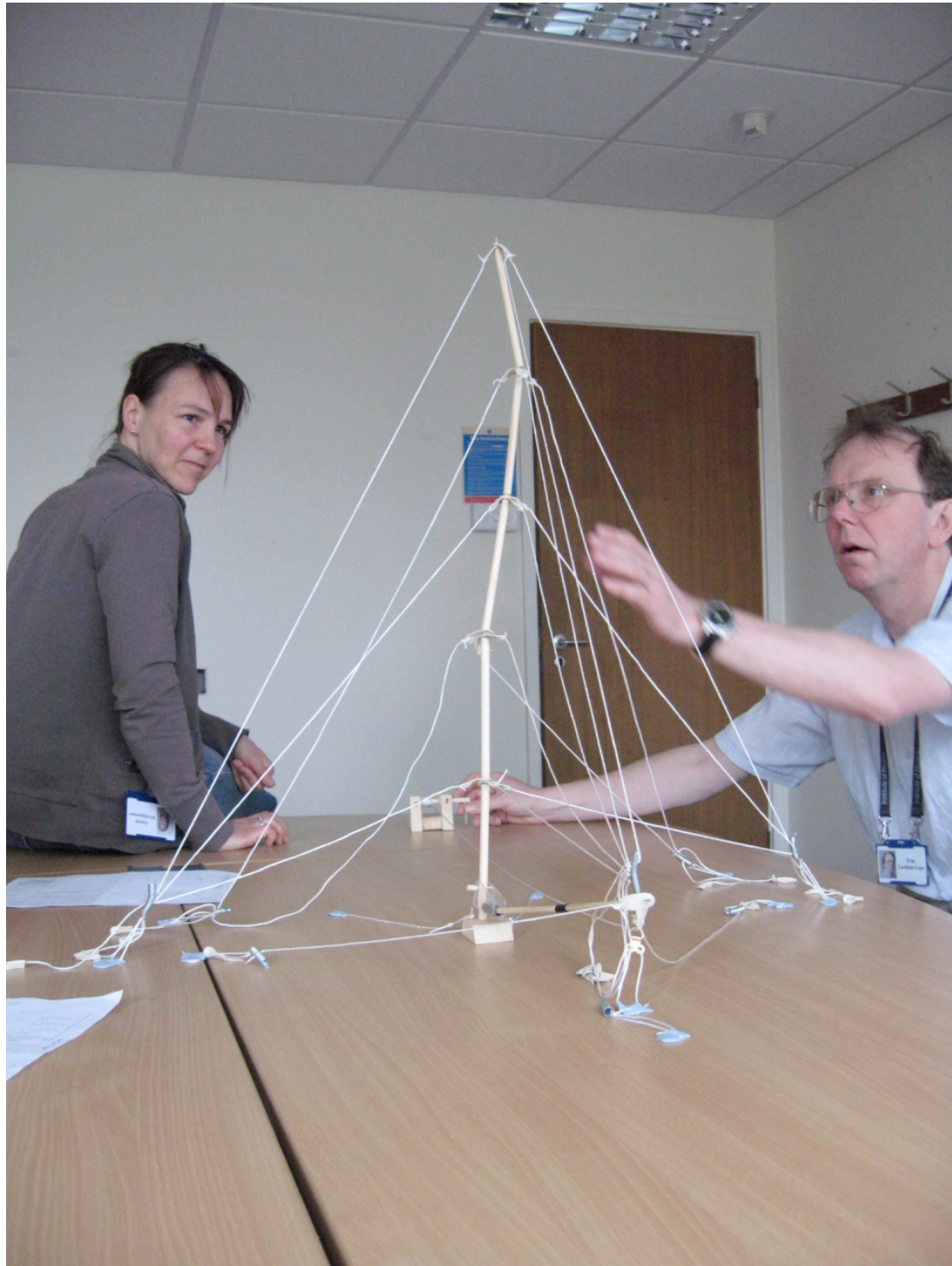


- Konrad Steffen serviced 3 AWS on the Larsen C.
- During the 2011/12 season two of the station will be removed and the third one will be taken over by BAS.

OFCAP

- Orographic Flow and Climate on the Antarctic Peninsula.
- Field Camp on the Larsen C
 - Full surface energy balance.
 - Radiosonde launches.
- AWS transect.
- Airbourne measurements.















Questions